



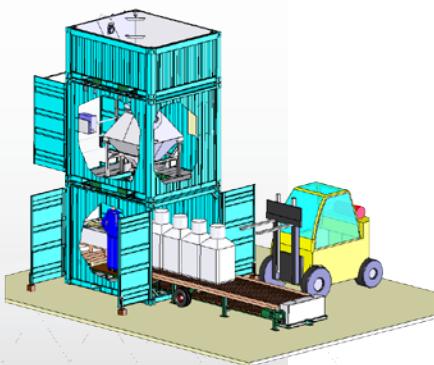
# TRIPLE PORTABLE CONTAINER FIBC BIG BAG SINGLE WEIGH SCALE

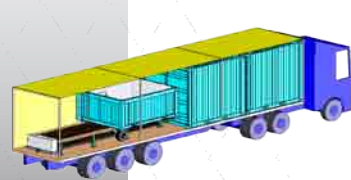
**CAPACITY:**  
70 TON PER HOUR:  
140 BIG BAGS OF 500-600 KG  
OR 70 BAGS OF  
1000 -1500 KG PER HOUR



- \* Easy to install
- \* Flexible location
- \* High capacity
- \* Compact design

Portable container FIBC big bag fill system with a capacity of 70 tons per hour. A big bag fill line that is completely integrated in 3 10 ft (3 meter) containers. The line is portable and can be moved to every decided place. The system consists of 1 weighing scale in the middle container, to weigh the product. The weighing slide discharges the product directly into the FIBC big bag. The big bags are removed by the chain conveyor unit. The container body's are made of mild steel, but storage hopper, weigh scale and fill pipe are all constructed of stainless steel #304. The machine operates with a Salter Weightronix weigh indicator. The complete bag fill operation can be done by 1 operator to fill the bags and to close the bags. One forklift moves the bags away. The complete line is portable and can be moved by ship/truck and fits in a trailer. Assembly of the Triple container big bag line is easy to do. The total system height is 6250 mm. The chain conveyor and the 3 containers are installed by a forklift. The 3 containers have 3 door openings to bring the big bags out and to have the possibility to bring empty big bags into the container and to have access to the middle container.





<b>Container big bag line</b>	
Total transport size	12 metre
Total height at operation - top elevator	6250 mm
Total width container	2434 mm
Total length container	3000 mm
Total height container	2434 mm
1 Weight scale	4 loadcells
Weight system	Stainless steel - digital
Weight hopper	Stainless steel
Ventilation	1 x blower
Filter system	Dust bag filter
Hopper construction	Stainless steel
Container frame construction	Mild steel
Example capacity of 500 kg bags	140 bags per hour
Example capacity of 1000 kg bags	70 bags per hour
Capacity storage hopper	3 m <sup>3</sup>
Capacity weighscale	Adjustable
Weight container	6000 kg
Machine setup	By forklift
Operators needed for a capacity of 70 Ton per Hour	1 operator for filling and closing bags. 1 forklift driver and 1 operator to bring material to container line.
Power supply	410 Volt-30 Amp-50Hz-3Phase
Type bags	FIBC big bags - 1 to 4 hooks, flexible
Capacity bags	100 - 1800 litre
Colour	RAL 7035
Machine operating	Electric - pneumatic
Weight / density	1 metric ton per 1 m <sup>3</sup>
Calibratable	Automatically
Installing	Flat and stable floor
Steel finishing	All mild steel is metal shot blasted and painted
Loadcell cables	Protected in tube
Chain conveyor	Portable - on wheels
Chain conveyor outside	4000 mm long
Chain conveyor length	6000 mm

